

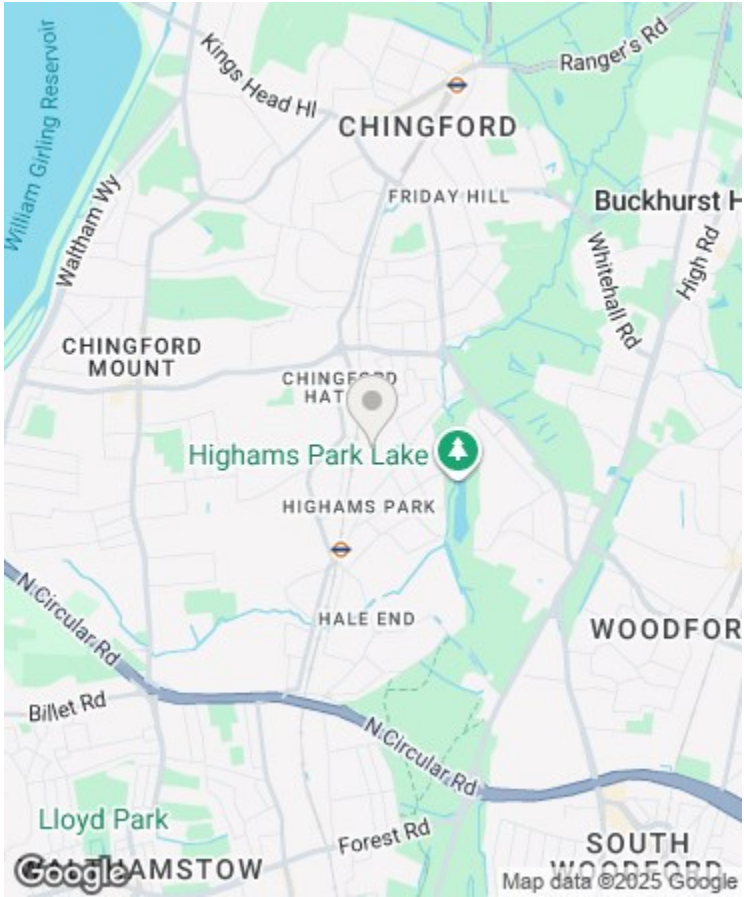
Directions

Viewings

Viewings by arrangement only. Call 02085042440 to make an appointment.

EPC Rating

| Energy Efficiency Rating | | |
|---------------------------------------------|---------|-----------|
| | Current | Potential |
| Very energy efficient - lower running costs | | |
| (92 plus) A | | |
| (81-91) B | | |
| (69-80) C | | |
| (55-68) D | | |
| (39-54) E | | |
| (21-38) F | | |
| (1-20) G | | |
| Not energy efficient - higher running costs | | |
| England & Wales | | |
| EU Directive 2002/91/EC | | |



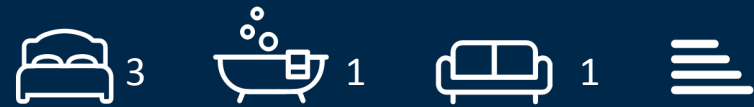
43 Richmond Crescent, Highams Park, Chingford, E4 9RT

Asking Price £675,000

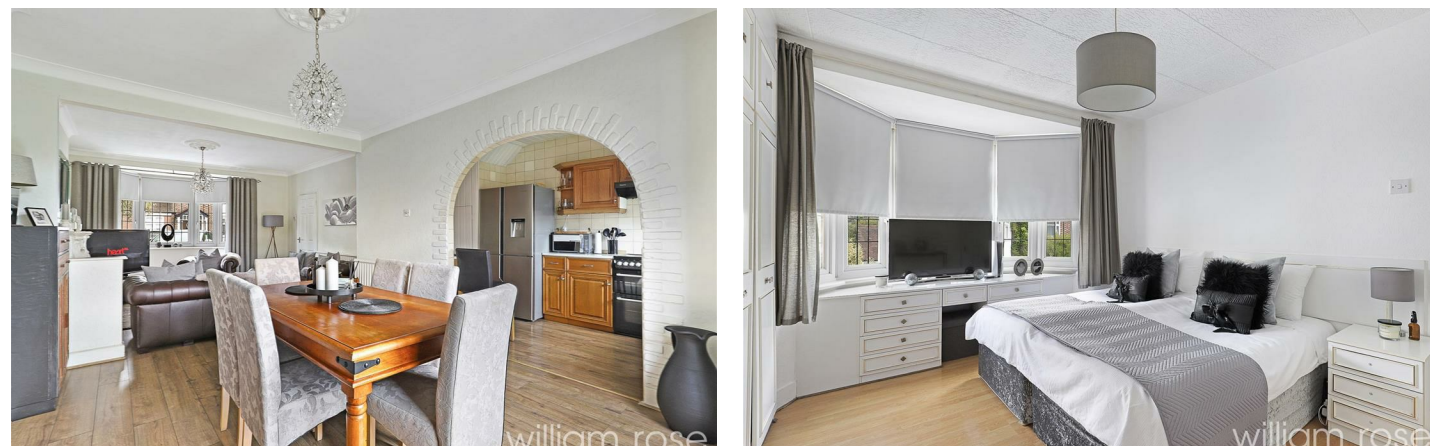
- Three Bedrooms
- 1930's Period Features
- Large Rear Garden
- Large Through Lounge
- Close to popular schools and local amenities
- Mid-Terrace
- Potential to Extend (STPP)
- Off-Street Parking
- Quiet, tree-lined residential street
- South-West Facing Garden

43 Richmond Crescent, Chingford E4 9RT

A beautifully presented three-bedroom home on Richmond Crescent, featuring a spacious open-plan living area, modern kitchen, landscaped garden, and off-street parking. Ideally located close to the station, schools, shops, and green spaces.



Council Tax Band: D



On the peaceful and sought-after Richmond Crescent in the heart of Highams Park, this beautifully presented three-bedroom family home offers the perfect blend of traditional charm and modern living. Set within a popular residential area, the property is moments from the vibrant Highams Park centre, where you'll find a range of independent shops, and cafes.

This home welcomes you with a stylish frontage and off-street parking, leading into a bright hallway and through to a spacious open-plan reception and dining area. With a seamless connection to the rear garden, it's a perfect space for family life and entertaining. The contemporary kitchen is well-appointed with ample storage and worktop space, complemented by views of the landscaped garden —ideal for enjoying morning coffee or al fresco dining in warmer months.

Upstairs, the property boasts three well-proportioned bedrooms, including a generous primary bedroom with a charming bay window. A sleek family bathroom completes the first floor.

Richmond Crescent is a quiet, tree-lined road known for its friendly community atmosphere. Just a short walk away, Highams Park Overground Station offers swift access to Liverpool Street, making this an excellent choice for commuters. The area is also home to several well-regarded primary and secondary schools, as well as the picturesque Highams Park Lake and Epping Forest, offering abundant green space for weekend strolls and outdoor adventures.

This delightful home represents an ideal opportunity for growing families or professionals seeking a home with character in a well-connected and green part of North East London.